

Standard Equipment

- Projection screen
- Flip Chart
- White board
- Pens and notebooks
- Wireless Viking Public Internet connection
- PC-projector

Standard Equipment, auditorium

- Projection screen
- Flip charts
- Video (VHS)
- CD-player
- DVD-player
- PC-projector
- Panel board
- Headset (microphone)
- Wireless hand-held microphone

Accessories for the Conference rooms and/or auditorium

- Overhead projector
- CD (portable)
- Video camera (digital)
- Extra projection screen
- Extra flip chart
- Wireless Viking Business Internet connection
- PC loudspeakers
- 46" LCD monitor mounted on a cart
- Laptop available for rental
- Speaker's chair + microphone

Bookings via Viking Lines Group and Conference department.

Additional Conference services

- Copying (additional charges apply)

Additional information

- Speakers in some rooms
- Hearing loop in AU1, as well as a portable one for rental, SEK 1000
- 4 standing desks for rental, SEK 200/table
- S31–35 can be rented as fair space

Elevator Capacity to the Conference Deck 9

Elevator door width: 95 cm
Weight Capacity: 1000kg (2200lbs.)

VIKING CINDERELLA

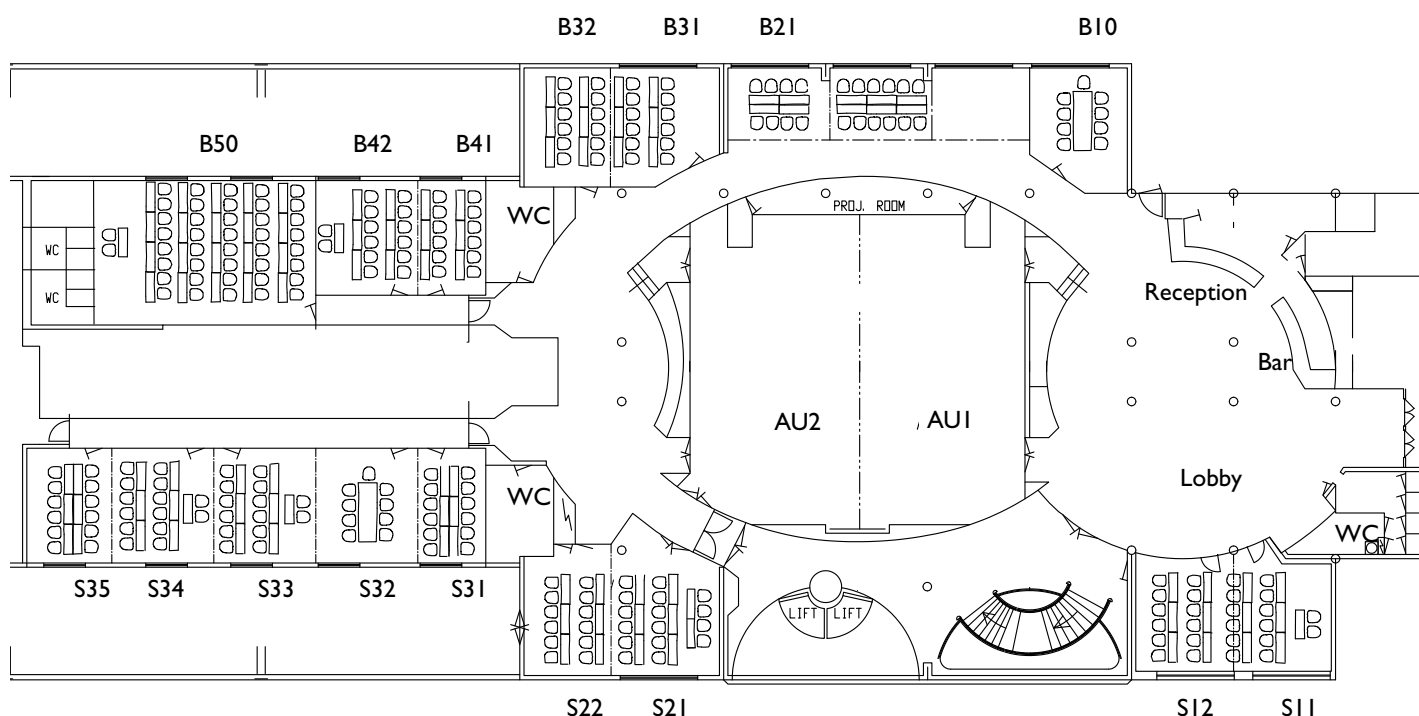
Deck 9 Conference Deck

Code	Furnishing	Seating capacity	Room Width, Doorway to window	Room Length, Front to back
B10	Boardroom	10	510 cm	410 cm
B21	Boardroom	17	280 cm	960 cm
B31	Classroom	15	420 cm	490 cm
	U Table	13		
B32	Classroom	13	540 cm	430 cm
	U Table	12		
B41	Boardroom	8	490 cm	320 cm
B42	Classroom	12	490 cm	450 cm
	U Table	12		
B50	Classroom	49	635 cm	1020 cm
S11	Classroom	13	580 cm	450 cm
	U Table	12		
S12	Boardroom	8	520 cm	460 cm
S21	Classroom	13	540 cm	480 cm
	U Table	8		
S22	Classroom	13	540 cm	420 cm
	U Table	12		
S31	Boardroom	8	490 cm	300 cm
S32	Classroom	13	490 cm	480 cm
	U Table	12		
S33	Classroom	13	490 cm	420 cm
	U Table	12		
S34	Classroom	13	490 cm	480 cm
	U Table	12		
S35	Boardroom	8	490 cm	360 cm
AU1	Auditorium (Chairs are fixed)	106	820 cm	1420 cm
AU2	Auditorium (Chairs are fixed)	104	820 cm	1420 cm

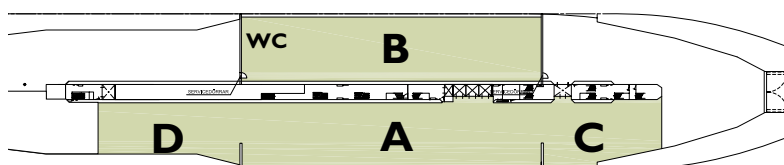
COMBINATIONS

B31+B32	Classroom	27	540 cm	930 cm
	U Table	19		
B41+B42	Classroom	25	490 cm	790 cm
	U Table	19		
S11 + S12	Classroom	31	550 cm	930 cm
	U Table	21		
S21 + S22	Classroom	31	540 cm	910 cm
	U Table	21		
S31 + S32	Classroom	27	770 cm	780 cm
	U Table	19		
S31 + S32	Classroom	39	1185 cm	490 cm
+ S33	U Table	27		
S34 + S35	Classroom	27	830 cm	900 cm
	U Table	19	490 cm	480 cm

Deck 9 Conference Deck



Event Deck



Area	Area m ²	Booking information
A	660 m ²	Always first
B	660 m ²	Only in combination with A
C	240 m ²	Only in combination with A
D	350 m ²	Only in combination with A
Total	1910 m²	

Cinderella Event deck

Groups and Charter customers are invited to hire parts of the car deck as, for example, a large activity area. The event deck can be used only when the ship is in dock.

Included in the rental price for such a booking is:

- textile coverings for the floor
- drapes for the walls
- ceiling lights
- electricity drawn to two central mains
- Viking Public Internet connections

Additional interior decoration and/or equipment can be ordered, with all costs paid by the customer

The following rules and regulations issued by the Swedish Maritime Administration must be followed when renting any of these four sections, for group and charter customers.

- No vehicles or other methods of transportation containing fuel, propellants, flammable liquids, or dangerous substances may be present on the car deck during the time it is being used for the event.
- The water tight passenger doors (on either side of A and B area) may not be opened during the event. These doors may only be opened when the Cinderella is berthed at her dock or otherwise lies at anchor.

Internet Connections:

Viking Public

Viking Public is our free solution for connecting you to the Internet. Viking Public is available via wireless WiFi connection in the conference rooms, café and event deck (CIN).

Viking Business

Viking Business is our pay per use alternative which is much faster than Viking Public. Regarding the download speed from the Internet and the upload speed of data, Viking Business sports a download capacity of between 1,0–1,5 Mbits while uploading works at ca. 0,08 Mbits.

Please have your IT technician contact the Ship's Conference technician ahead of your trip, with any technical, program or event inquires.

Viking Business as well as Viking Public are satellite based internet solutions with specific traffic capacities and therefore, performance should not be compared to land based solutions.